

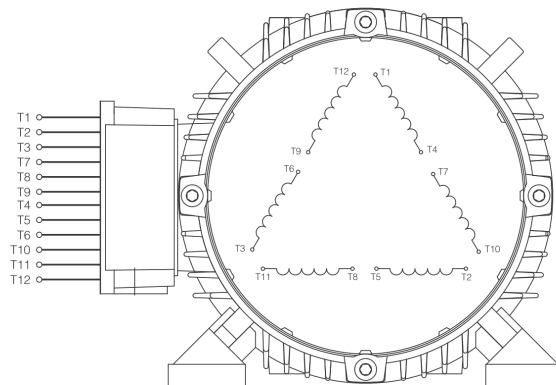
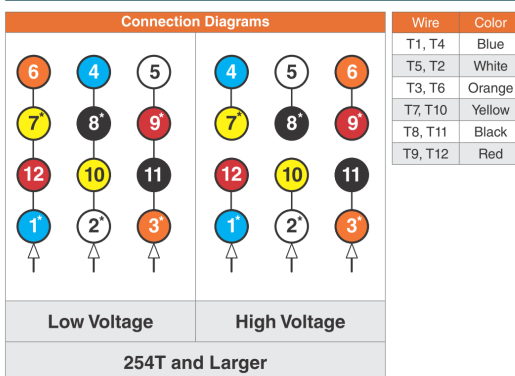


<b>MOTOR MODEL:</b>	GX3-AL-TF-254TC-4-BR-D-15
<b>FACTORY TYPE:</b>	TXA

# NEMA

## Premium NEMA Cast Aluminum, TEFC

### 3 Phase NEMA $\Delta/\Delta$ 12 Lead 230/460V



When motor is in F1 position, leads shown with "\*" exit the casing above the center line of the motor, the remaining leads exit below the center line. This information can be used to identify missing or mislabelled leads.

<b>MOTOR MODEL:</b>	GX3-AL-TF-254TC-4-BR-D-15
<b>FACTORY TYPE:</b>	TXA

## Premium NEMA Cast Aluminum, TEFC

