

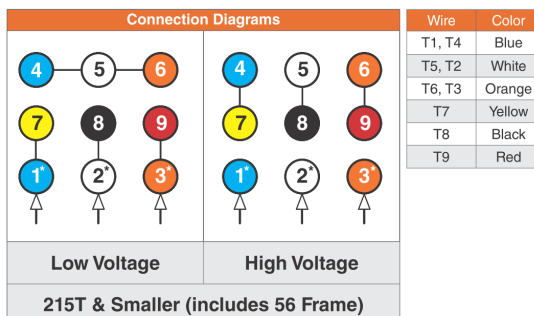


<b>MOTOR MODEL:</b>	GX3-AL-TF-182TC-6-B-D-1.5
<b>FACTORY TYPE:</b>	TXA

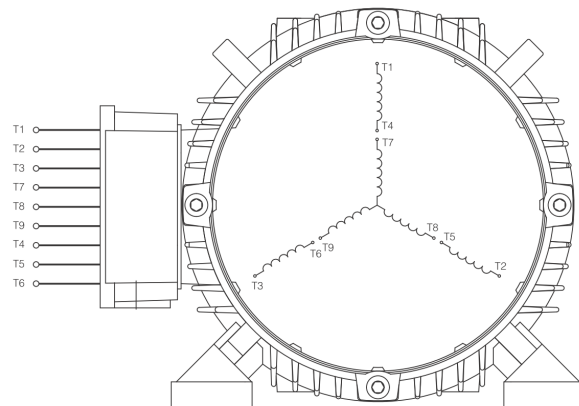
---

 Premium NEMA Cast Aluminum, TEFC
 

---

**3 Phase NEMA YYY 9 Lead 230/460V**


When motor is in F1 position, leads shown with "\*" exit the casing above the center line of the motor, the remaining leads exit below the center line. This information can be used to identify missing or mislabelled leads.



<b>MOTOR MODEL:</b>	GX3-AL-TF-182TC-6-B-D-1.5
<b>FACTORY TYPE:</b>	TXA

## Premium NEMA Cast Aluminum, TEFC

