



SERVICE PARTS LIST

BULLETIN NO.
54-06-0240

SPECIFY CATALOG NO. AND SERIAL NO. WHEN ORDERING PARTS		REVISED BULLETIN	DATE
3/8" (10mm) DRILL			Sept. 2009
CATALOG NO.	0240-20	STARTING SERIAL NO.	C32A
		WIRING INSTRUCTION 58-01-0205	

EXAMPLE:

00	0
----	---

 Component Parts (Small #) Are Included When Ordering The Assembly (Large #).

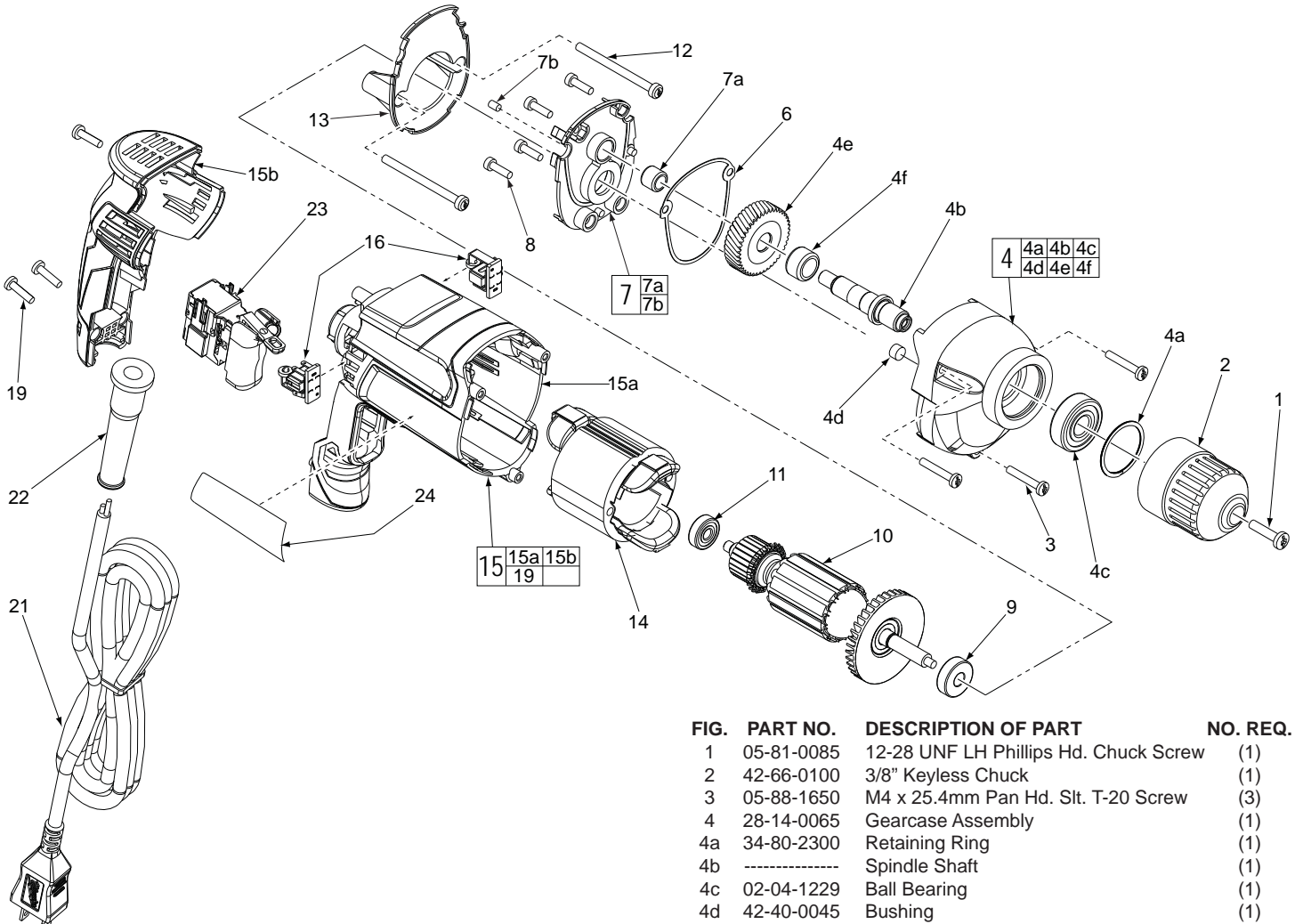


FIG.	PART NO.	DESCRIPTION OF PART	NO. REQ.
1	05-81-0085	12-28 UNF LH Phillips Hd. Chuck Screw	(1)
2	42-66-0100	3/8" Keyless Chuck	(1)
3	05-88-1650	M4 x 25.4mm Pan Hd. Slit. T-20 Screw	(3)
4	28-14-0065	Gearcase Assembly	(1)
4a	34-80-2300	Retaining Ring	(1)
4b	-----	Spindle Shaft	(1)
4c	02-04-1229	Ball Bearing	(1)
4d	42-40-0045	Bushing	(1)
4e	-----	Spindle Gear	(1)
4f	45-36-1100	Spindle Spacer	(1)
6	43-44-0935	Gasket	(1)
7	28-28-0070	Diaphragm Assembly	(1)
7a	02-50-0030	Needle Bearing	(1)
7b	31-53-0240	Bearing Retaining Plug	(1)
8	05-88-1210	M4 x 14mm Pan Hd. T-20 Screw	(4)
9	02-04-0620	Ball Bearing	(1)
10	16-10-0085	Service Armature	(1)
11	02-04-0645	Ball Bearing	(1)
12	06-81-0130	8-32 x 57mm Pan Hd. T-20 Screw	(2)
13	31-05-0115	Baffle	(1)
14	18-07-0085	Service Field	(1)
15	31-50-0215	Motor Housing and Handle Kit	(1)
15a	-----	Motor Housing	(1)
15b	-----	Handle Cover	(1)
16	22-22-1560	Carbon Brush Assembly	(2)
17	23-94-0455	Leadwire Assy. (Not Shown, See 58-01-0205)	(2)
19	06-82-7275	7-18 x 3/4" Pan Hd. Slit. Plast. T-20 Screw	(3)
21	22-64-0216	Power Cord	(1)
22	44-76-0210	Cord Protector	(1)
23	23-66-0445	Variable Speed Switch	(1)
24	12-20-0085	Service Nameplate Kit	(1)

FIG. NOTES:
 8 Apply Type 609 Loctite® (or equivalent) to the threads of the Screws that join the Diaphragm Assembly (7) to the Gearcase Assembly (4).

11 Orient Ball Bearing so the seal faces the commutator of the Armature (10).

FIG. LUBRICATION:
 4 Place 8 grams (.28 ounce) of Type 'Y' Grease, 49-08-5270 in the lower cavity of the Gearcase (4).

4e,10 Be sure that all pinion teeth on Armature (10) and all teeth on Spindle Gear (4e) are liberally coated with Type 'Y' Grease.

SCREW / CHUCK TORQUE CHART				
Fig.	Number	Description	Seat Torque	
			(kg.-cm)	(in.-lbs.)
1	05-81-0085	Chuck Screw	45-55	39-48
2	42-66-0100	3/8" Keyless Chuck	105-135	91-117
3	05-88-1650	Gearcase Screws	14-22	12-19
8	05-88-1210	Diaphragm Screws	20-30	17-26
12	06-81-0130	Field Screws	14-22	12-19
19	06-82-7675	Handle Cover Screws	12-20	10-17