

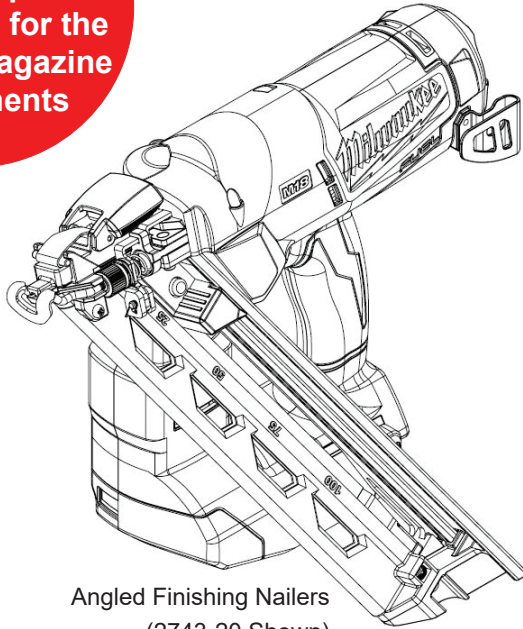


# SERVICE PARTS LIST

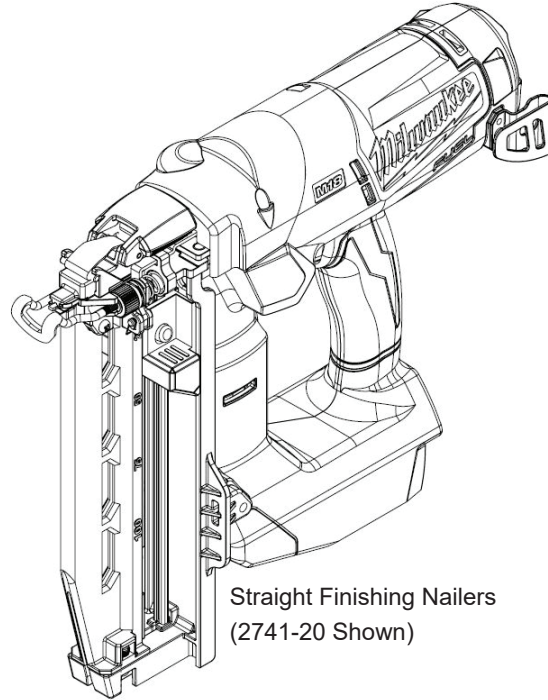
BULLETIN NO.  
54-00-FNLR

SPECIFY CATALOG NO. AND SERIAL NO. WHEN ORDERING PARTS	REVISED BULLETIN	DATE
<b>M18™ FUEL™ Finishing Nailers</b>		Oct. 2019
CATALOG NO. 2740-20, 18 Ga. Straight Finishing Nailer 2741-20, 16 Ga. Straight Finishing Nailer 2742-20, 16 Ga. Angled Finishing Nailer 2743-20, 15 Ga. Angled Finishing Nailer	WIRING INSTRUCTION	

See  
 Pages 2, 3,  
 4 and 5 for  
 Service Replace-  
 ment parts for the  
 different Magazine  
 Attachments



Angled Finishing Nailers  
(2743-20 Shown)



Straight Finishing Nailers  
(2741-20 Shown)

## Milwaukee Electric Tool: M18™ FUEL™ Finishing Nailers and applicable Magazine Assemblies

**Due to the combination of the compressed air system and electronics in this tool, service can only be performed at this Milwaukee factory Central Repair Center:**

**MILWAUKEE ELECTRIC TOOL Central Repair  
1401 Sycamore Avenue • Greenwood, MS 38930-7277**

Please send your tool directly to this location for service.

If you have questions please contact Milwaukee Product Service at:

**Product Technical Support via phone at: 262.783.8642**

Or

**Via email at: METProductSupport @milwaukeetool.com**

Disassembly is not recommended and could void the warranty.

# 2740-20, 18 Ga. Straight Finishing Nailer Magazine Attachment

FIG.	PART NO.	DESCRIPTION OF PART	NO. REQ.
1	44-60-1124	Solid Pin	1
2	44-60-1123	Solid Pin	2
3	42-09-0297	Release Bracket Pivot Arm	1
4	-----	Release Latch	1
6	42-36-0205	Release Bracket	1
7	44-34-0009	Front Upper Receiver, 18 Ga. Straight	1
8	44-60-1122	Step Connecting Pin	1
9	44-34-0011	Rear Upper Receiver, 18 Ga. Straight	1
10	42-38-0142	No-Mar Pad	1
11	44-94-0204	Work Contact Bracket	1
12	06-81-0166	M4 x 0.7 x 7 Pan Hd. T-20 Screw	1
13	45-60-0033	Support Block	1
14	44-34-0012	Feed Lip, 18 Ga. Straight	1
15	-----	Depth Adjustment Wheel	1
16	-----	C-Ring	1
17	-----	External Retaining Ring	1
21	40-50-1841	Spring	1
27	05-75-0011	M4 x 0.7 x 5.3 Cap Hd. Hex Screw	1
28	05-88-1210	M4 x 0.7 x 14 Pan Hd. T-20 Screw	1
37	44-20-0537	Latch	1
38	40-50-0372	Spring	1
39	44-60-0171	Coil Pin	2
40	44-66-0186	Magazine Back Plate	1
41	-----	Latch Plate	1

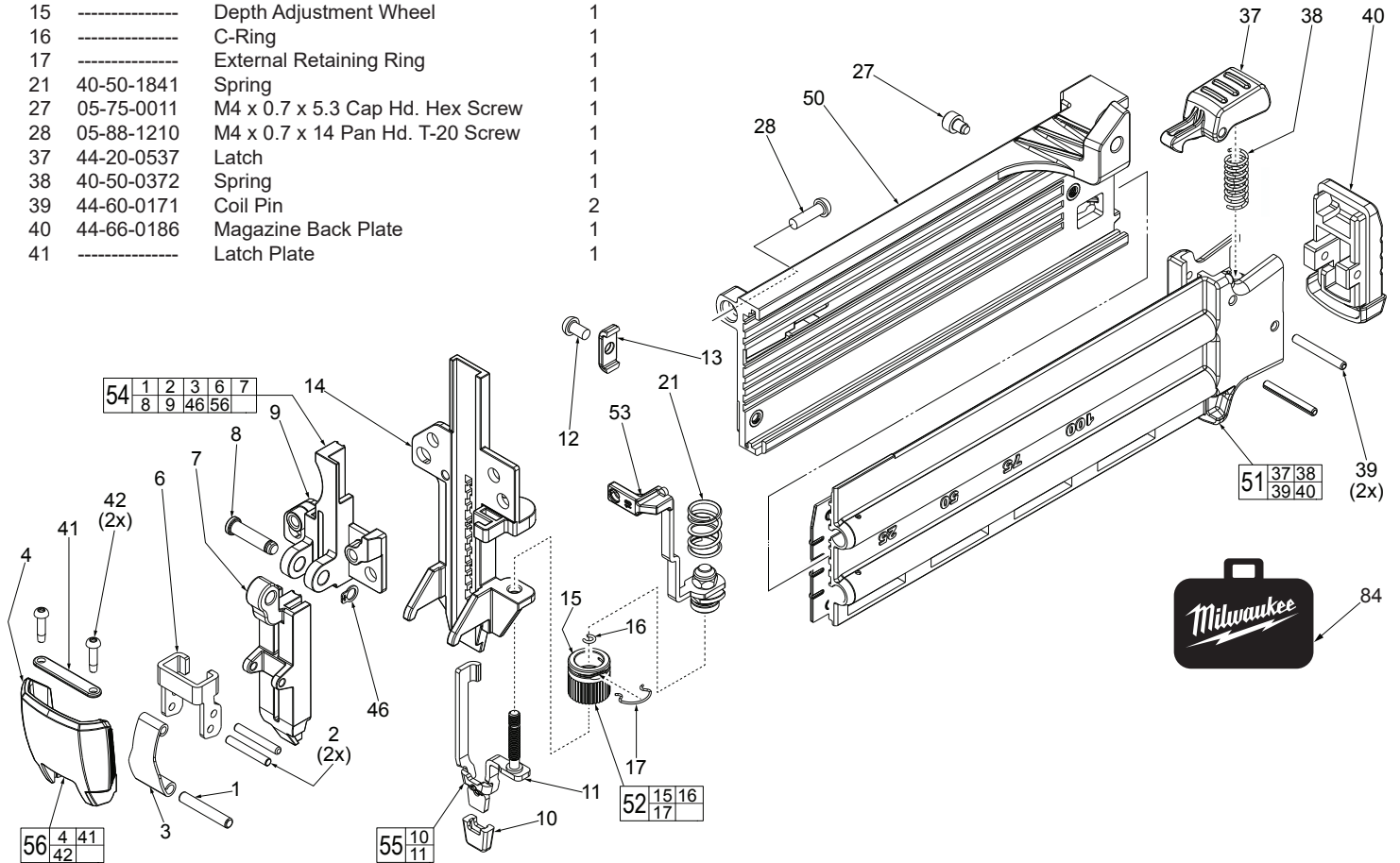


FIG.	PART NO.	DESCRIPTION OF PART	NO. REQ.
42	06-82-1087	M3 x 12mm Pan Hd. ST T-10 Screw	2
46	34-60-2493	External Retaining Ring	1
50	43-40-0909	Stationary Magazine Assembly	1
51	43-40-0910	Sliding Magazine Assembly	1
52	45-94-0304	Depth Adjustment Wheel Kit	1
53	44-14-0307	Depth Adjustment Assembly	1
54	44-34-0013	Rear upper Receiver Assembly, 18 Ga. S	1
55	44-52-0011	No-Mar Pad/Work Contact Bracket Assy.	1
56	44-20-0176	Release Latch Assembly	1
84	48-55-3510	Contractor Bag	1

# 2741-20, 16 Ga. Straight Finishing Nailer Magazine Attachment

FIG.	PART NO.	DESCRIPTION OF PART	NO. REQ.
1	44-60-1124	Solid Pin	1
2	44-60-1123	Solid Pin	2
3	42-09-0295	Release Bracket Pivot Arm	1
4	-----	Release Latch	1
5	-----	Latch Plate	1
6	06-82-1087	M3 x 12mm Pan Hd. ST T-10 Screw	2
7	42-36-0205	Release Bracket	1
8	44-34-0049	Front Upper Receiver, 16 Ga. Straight	1
9	44-60-1122	Step Connecting Pin	1
10	44-34-0050	Rear Upper Receiver, 16 Ga. Straight	1
11	34-60-2493	External Retaining Ring	1
12	44-34-0051	Feed Lip, 16 Ga. Straight	1
13	06-81-0166	M4 x 0.7 x 7mm Pan Hd. T-20 Screw	1
14	06-82-3065	M5 x 0.8 x 15mm Pan Hd. T-25 Screw	1

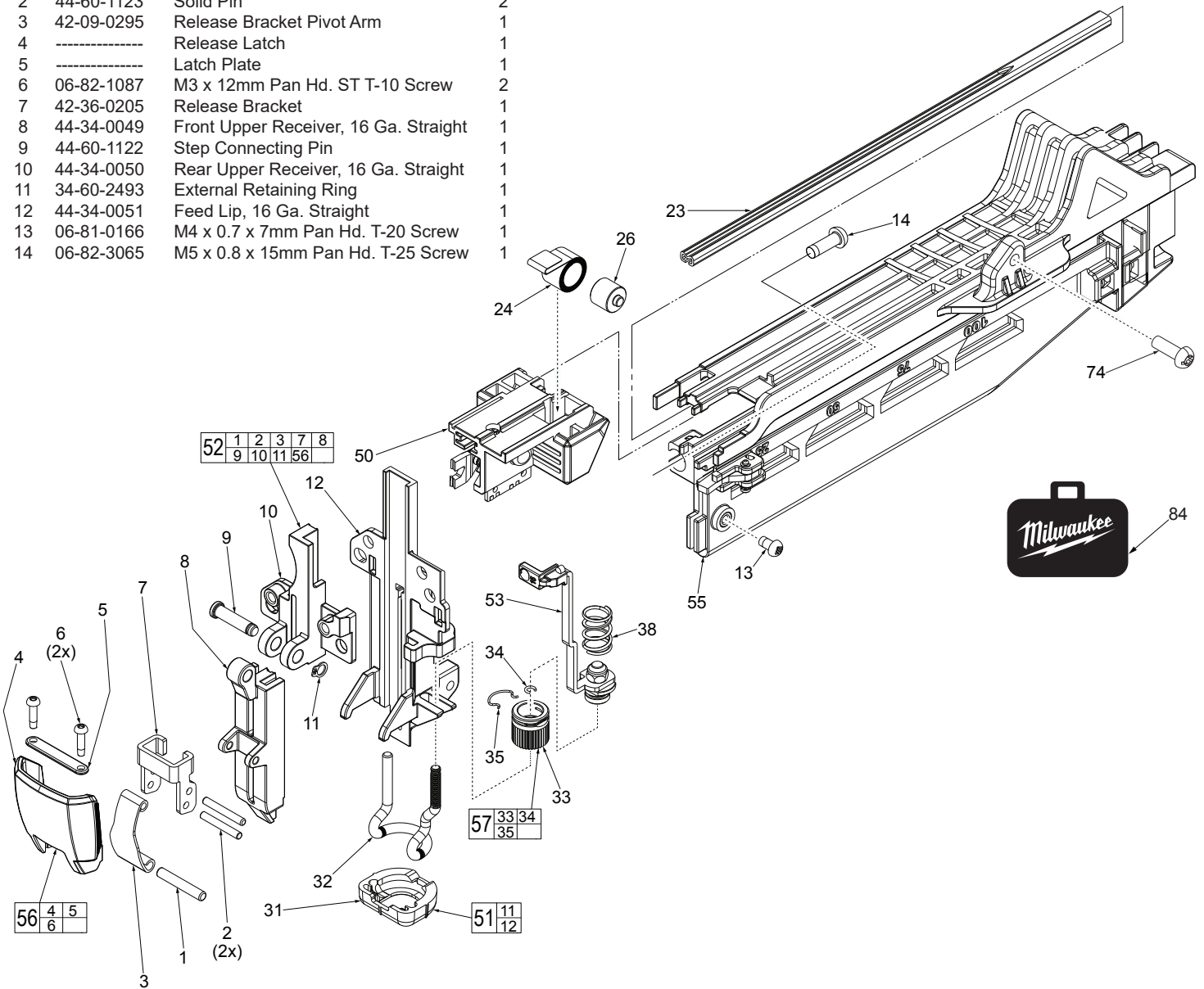


FIG.	PART NO.	DESCRIPTION OF PART	NO. REQ.
23	44-81-0049	Magazine Channel, 16 Ga. Straight	1
24	40-50-1843	Constant Force Spring	1
26	44-96-0310	Magazine Roller	1
31	42-38-0143	No-Mar Pad	1
32	44-94-0206	Work Contact Bracket	1
33	-----	Depth Adjustment Wheel	1
34	-----	C-Ring	1
35	-----	External Retaining Ring	1
38	40-50-1841	Spring	1
50	45-24-0329	Magazine Pusher Assembly	1
51	44-52-0012	No-Mar Pad/Work Contact Bracket Assy.	1
52	44-34-0016	Rear Upper Receiver Assy., 16 Ga. Straight	1
53	44-14-0309	Depth Adjustment Assembly	1
55	43-40-0911	Magazine Assembly, 16 Ga. Straight	1
56	44-20-0176	Release Latch Assembly	1
57	45-94-0304	Depth Adjustment Wheel Kit	1
74	06-82-3065	M5 x 0.8 Pan Hd. T-25 Machine Screw	1
84	48-55-3510	Contractor Bag	1

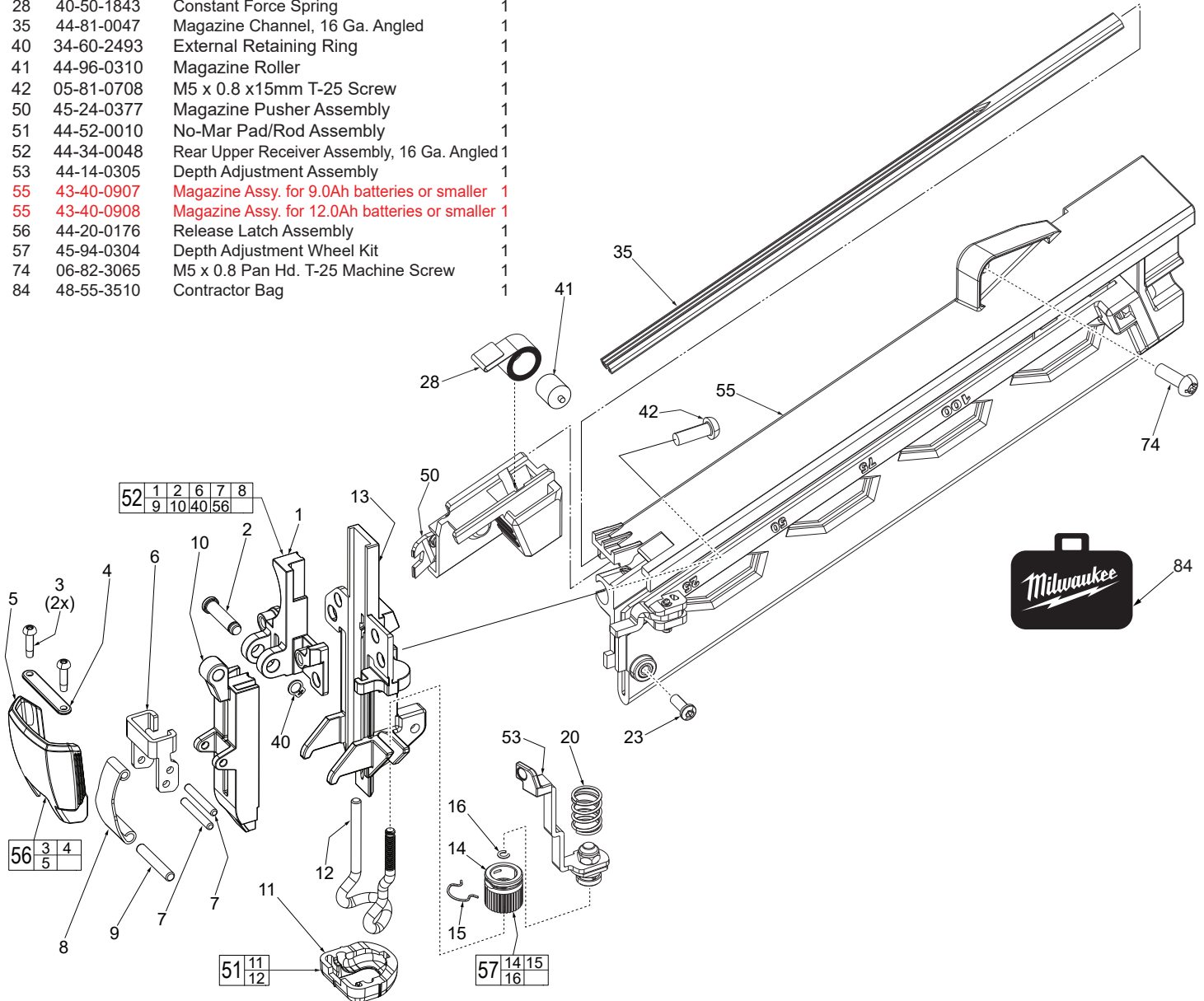
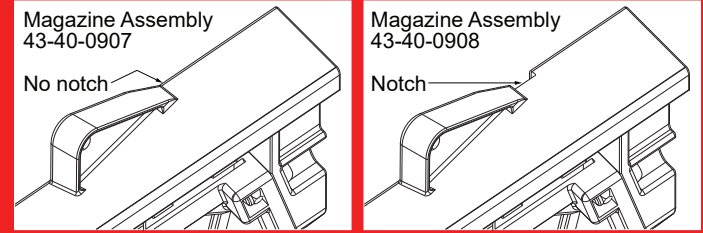
# 2742-20, 16 Ga. Angled Finishing Nailer Magazine Attachment

FIG.	PART NO.	DESCRIPTION OF PART	NO. REQ.
1	44-34-0045	Rear Upper Receiver, 16 Ga. Angled	1
2	44-60-1122	Step Connecting Pin	1
3	06-82-1087	M3.0 x 12mm Pan Hd. ST T-10 Screw	2
4	-----	Latch Plate	1
5	-----	Release Latch	1
6	42-36-0205	Release Bracket	1
7	44-60-1123	Latch Pin	2
8	42-09-0295	Release Bracket Pivot Arm	1
9	44-60-1124	Catch Pin	1
10	44-34-0046	Front Upper Receiver, 16 Ga. Angled	1
11	42-38-0141	No-Mar Pad	1
12	44-94-0202	Work Contact Rod	1
13	44-34-0047	Feed Lip, 16 Ga. Angled	1
14	-----	Depth Adjustment Wheel	1
15	-----	External Retaining Ring	1
16	-----	C-Ring	1
20	40-50-1841	Depth Adjustment Spring	1
23	05-81-0166	M4.0 x 0.7 x 7mm Pan Hd. T-20 Screw	1
28	40-50-1843	Constant Force Spring	1
35	44-81-0047	Magazine Channel, 16 Ga. Angled	1
40	34-60-2493	External Retaining Ring	1
41	44-96-0310	Magazine Roller	1
42	05-81-0708	M5 x 0.8 x15mm T-25 Screw	1
50	45-24-0377	Magazine Pusher Assembly	1
51	44-52-0010	No-Mar Pad/Rod Assembly	1
52	44-34-0048	Rear Upper Receiver Assembly, 16 Ga. Angled	1
53	44-14-0305	Depth Adjustment Assembly	1
55	43-40-0907	Magazine Assy. for 9.0Ah batteries or smaller	1
55	43-40-0908	Magazine Assy. for 12.0Ah batteries or smaller	1
56	44-20-0176	Release Latch Assembly	1
57	45-94-0304	Depth Adjustment Wheel Kit	1
74	06-82-3065	M5 x 0.8 Pan Hd. T-25 Machine Screw	1
84	48-55-3510	Contractor Bag	1

**NOTE:**  
The initial Magazine design on model 2742-20 allows the tool to operate off of several different M18 REDLITHIUM™ battery sizes from a 1.5 amp-hours up to 9.0 amp-hours.

To power an earlier version of the 2742-20 with a 48-11-1812 M18™ REDLITHIUM™ 12.0 amp-hour battery, Magazine Assembly 43-40-0908 must be ordered and installed.

See the detail below to determine what magazine assembly is on your tool.



# 2743-20, 15 Ga. Angled Finishing Nailer Magazine Attachment

**NOTE:**  
The initial Magazine design on model 2743-20 allows the tool to operate off of several different M18 REDLITHIUM™ battery sizes from a 1.5 amp-hours up to 9.0 amp-hours.

To power an earlier version of the 2743-20 with a 48-11-1812 M18™ REDLITHIUM™ 12.0 amp-hour battery, Magazine Assembly 43-40-0902 must be ordered and installed.

See the detail below to determine what magazine assembly is on your tool.

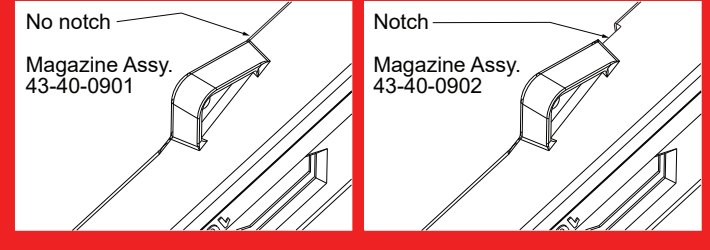


FIG.	PART NO.	DESCRIPTION OF PART	NO. REQ.
1	44-34-0005	Rear Upper Receiver, 15 Ga. Angled	1
2	44-60-1122	Step Connecting Pin	1
3	06-82-1087	M3.0 x 12mm Pan Hd. ST T-10 Screw	2
4	-----	Latch Plate	1
5	-----	Release Latch	1
6	42-36-0205	Release Bracket	1
7	44-60-1123	Latch Pin	2
8	42-09-0295	Release Bracket Pivot Arm	1
9	44-60-1124	Catch Pin	1
10	44-34-0006	Front Upper Receiver, 15 Ga. Angled	1
11	42-38-0141	No-Mar Pad	1
12	44-94-0202	Work Contact Rod	1
13	44-34-0007	Feed Lip, 15 Ga. Angled	1
14	-----	Depth Adjustment Wheel	1
15	-----	External Retaining Ring	1
16	-----	C-Ring	1
20	40-50-1841	Depth Adjustment Spring	1
23	05-81-0166	M4.0 x 0.7 x 7mm Pan Hd. T-20 Screw	1
28	40-50-1843	Constant Force Spring	1
35	44-81-0045	Magazine Channel, 15 Ga. Angled	1
40	34-60-2493	External Retaining Ring	1
41	44-96-0310	Magazine Roller	1
42	05-81-0708	M5 x 0.8 x 15mm T-25 Screw	1
50	45-24-0375	Magazine Pusher Assembly	1
51	44-52-0010	No-Mar Pad/Rod Assembly	1
52	44-34-0008	Rear Upper Receiver Assembly, 15 Ga. Angled	1
53	44-14-0305	Depth Adjustment Assembly	1
55	43-40-0901	Magazine Assy. for 9.0Ah batteries or smaller	1
55	43-40-0902	Magazine Assy. for 12.0Ah batteries or smaller	1
56	44-20-0176	Release Latch Assembly	1
57	45-94-0304	Depth Adjustment Wheel Kit	1
74	06-82-3065	M5 x 0.8 Pan Hd. T-25 Machine Screw	1
84	48-55-3510	Contractor Bag	1

