



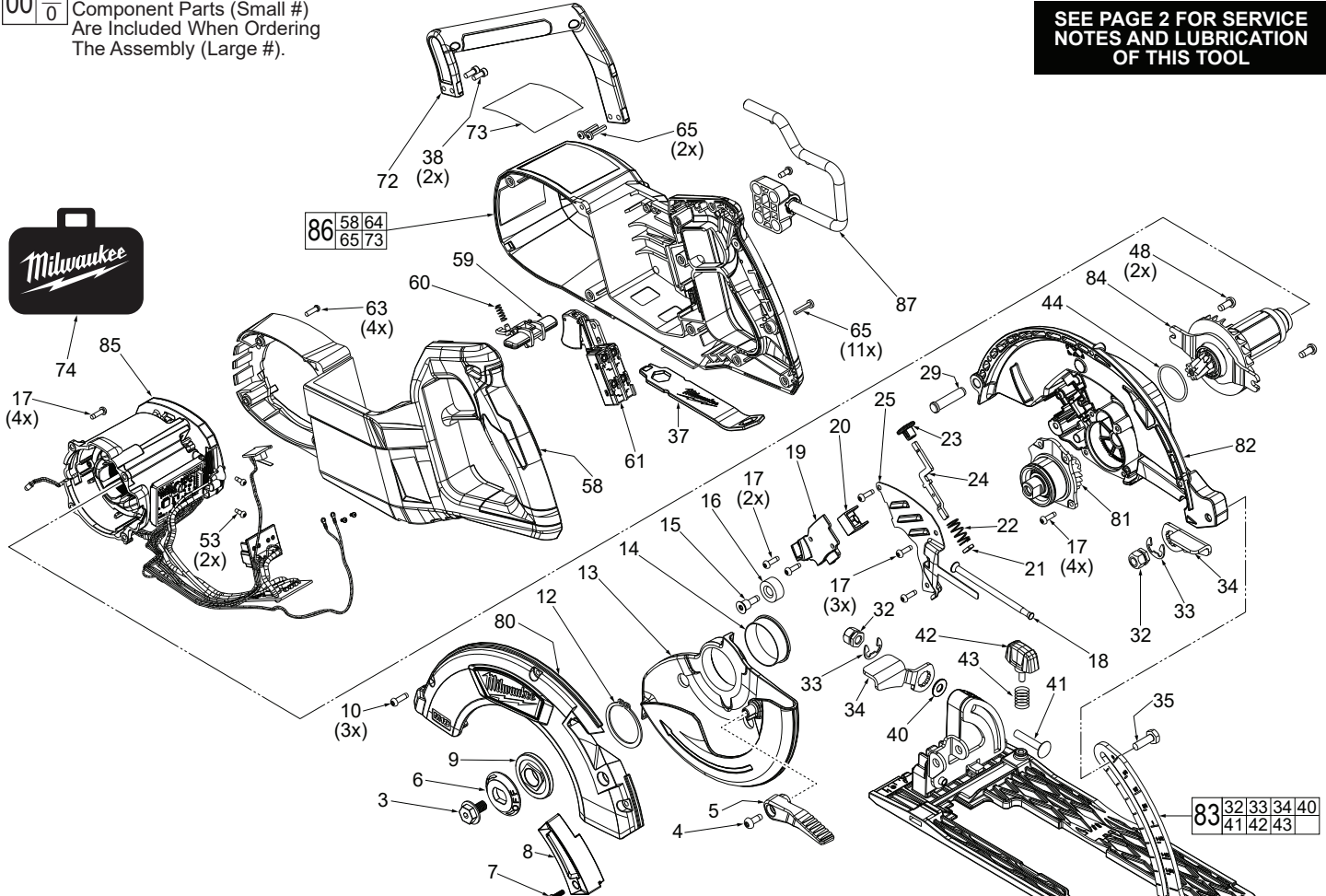
SERVICE PARTS LIST

**BULLETIN NO.
54-40-0830**

| | | | |
|--|----------------|---|-------------|
| SPECIFY CATALOG NO. AND SERIAL NO. WHEN ORDERING PARTS | | REVISED BULLETIN | DATE |
| M18 FUEL™ Rear Handle Circular Saw | | | June 2019 |
| CATALOG NO. | 2830-20 | STARTING SERIAL NO. | K43A |
| | | WIRING INSTRUCTION See Page Three | |

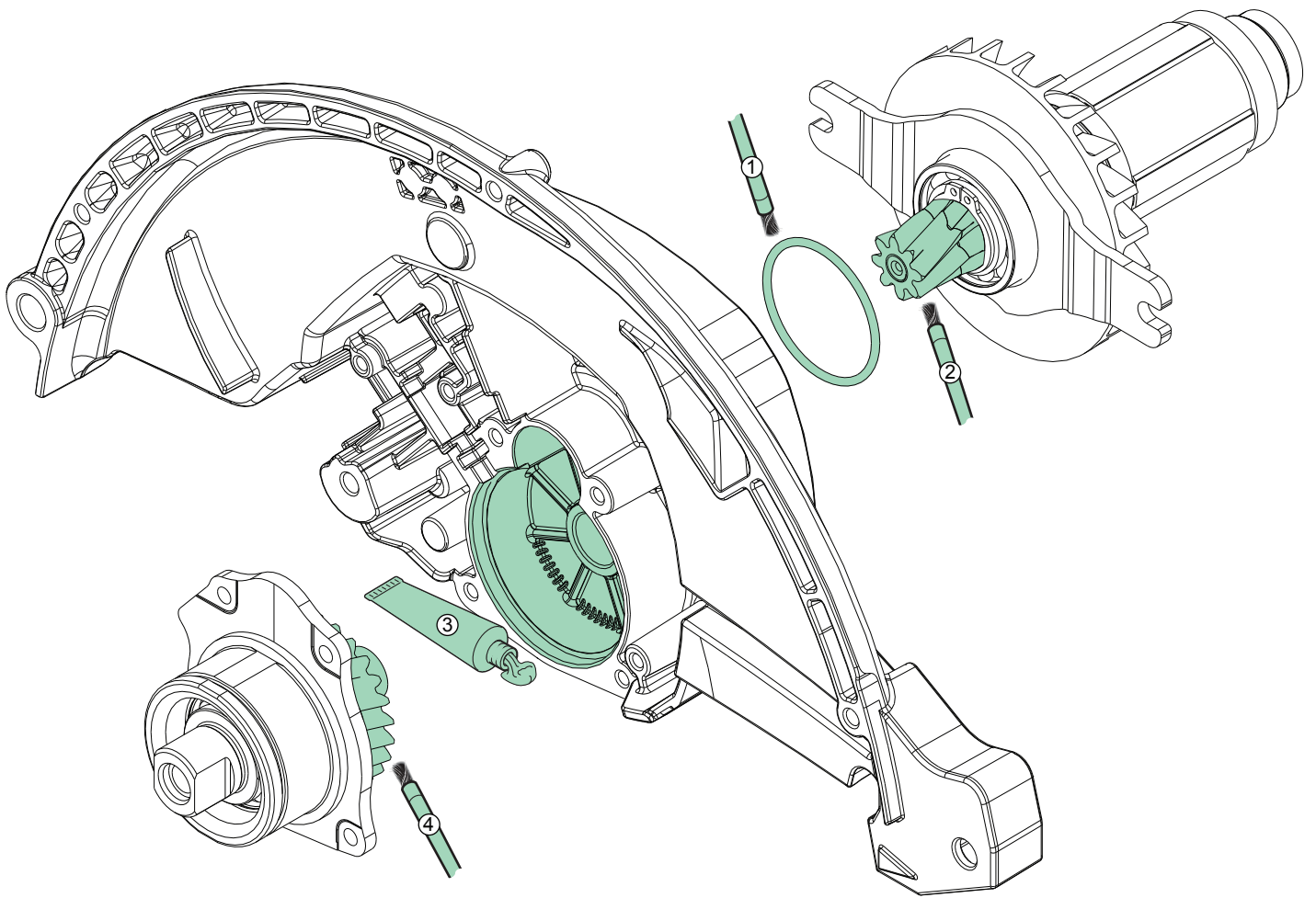
EXAMPLE:
Component Parts (Small #)
Are Included When Ordering
The Assembly (Large #).

**SEE PAGE 2 FOR SERVICE
NOTES AND LUBRICATION
OF THIS TOOL**



| FIG. | PART NO. | DESCRIPTION OF PART | NO. REQ. |
|------|------------|--|----------|
| 3 | 06-75-1010 | Left Hand Blade Screw | (1) |
| 4 | 06-82-5314 | 10-24 x1/2 Pan Hd. Taptite T-25 Screw | (1) |
| 5 | 44-10-1080 | Lower Guard Lever | (1) |
| 6 | 43-34-0426 | Outer Blade Flange | (1) |
| 7 | 05-78-1005 | M3.5 x 12mm Pan Hd. Phillips Machine Screw | (1) |
| 8 | 31-15-0002 | Dust Chute | (1) |
| 9 | 43-34-0427 | Inner Blade Flange | (1) |
| 10 | 05-78-5316 | M4 x 14mm Pan Hd. Taptite T-20 Screw | (3) |
| 12 | 34-60-0860 | Retaining Ring | (1) |
| 13 | 28-41-0102 | Lower Guard | (1) |
| 14 | 45-14-0015 | Sleeve Ring | (1) |
| 15 | 45-04-0485 | Bumper Screw | (1) |
| 16 | 42-38-0224 | Rubber Bumper | (1) |
| 17 | 06-82-5285 | 6-32 x 1/2 Pan Hd. Taptite T-15 Screw | (13) |
| 18 | 40-50-0045 | Lower Guard Spring | (1) |
| 19 | 44-66-6310 | LED Cover | (1) |
| 20 | 22-09-2610 | LED Assembly | (1) |
| 21 | 45-06-0720 | Felt Seal | (1) |
| 22 | 40-50-8046 | Spindle Lock Spring | (1) |
| 23 | 42-42-1030 | Spindle Lock Button | (1) |
| 24 | 44-20-1105 | Spindle Lock | (1) |
| 25 | 44-66-6315 | Exhaust Plate | (1) |
| 29 | 44-60-0741 | Pivot Pin | (1) |
| 32 | 05-59-2045 | Drive Nut | (2) |
| 33 | 42-70-0140 | Bowed E-Ring | (2) |
| 34 | 44-10-1085 | Depth Adjustment Lever | (2) |
| 35 | 05-85-0056 | M6 x 19mm Hex Head Machine Screw | (1) |
| 37 | 49-96-0190 | Wrench | (1) |
| 38 | 05-74-0986 | M4 x 10mm Cap Hd. T-20 Screw | (2) |
| 39 | ----- | Shoe | (1) |
| 40 | 45-88-0136 | Washer | (1) |
| 41 | 06-10-0025 | M6 x 33mm Pan Hd. Bevel Screw | (1) |

| FIG. | PART NO. | DESCRIPTION OF PART | NO. REQ. |
|------|------------|---|----------|
| 42 | 43-98-0605 | Rip Fence Knob | (1) |
| 43 | 40-50-0650 | Spring | (1) |
| 44 | 34-40-8001 | O-Ring | (1) |
| 48 | 05-74-1030 | M5 x 12mm Pan Hd. Taptite T-25 Screw | (2) |
| 53 | 05-81-1195 | M3 x 8mm Pan Hd. ST T-10 Screw | (2) |
| 56 | 22-56-0005 | Close End Connector | (1) |
| 57 | 06-95-6215 | M5 x 14mm Pan Hd. Plastite T-20 Screw | (3) |
| 58 | ----- | Handle Support- Left Side | (1) |
| 59 | 42-42-0345 | Lock-Out Button | (1) |
| 60 | 40-50-1760 | Spring | (1) |
| 61 | 23-66-5027 | On-Off Switch | (1) |
| 63 | 05-78-1010 | M3.5 x 12mm Pan Hd. T-10 Machine Screw | (4) |
| 64 | ----- | Handle Cover - Right Side | (1) |
| 65 | 06-82-7470 | #6-19 x 11/16 Pan Hd. Plastite T-15 Screw | (13) |
| 72 | 31-44-0005 | Top Handle | (1) |
| 73 | 12-20-2830 | Service Nameplate | (1) |
| 74 | 42-55-6150 | Contractor Bag | (1) |
| 80 | 28-20-0028 | Upper Guard Cover Assembly | (1) |
| 81 | 38-50-0305 | Output Shaft Assembly | (1) |
| 82 | 28-14-1825 | Upper Guard Gearcase with Needle Bearing | (1) |
| 83 | 14-74-0305 | Shoe Assembly | (1) |
| 84 | 16-01-2820 | Rotor Assembly | (1) |
| 85 | 14-20-0259 | Electronics Assembly | (1) |
| 86 | 14-38-0580 | Handle/Housing Assembly | (1) |
| 87 | 14-34-7010 | Rafter Hook Assembly | (1) |
| 88 | 10-20-2953 | Warning Label (Not Shown) | (1) |
| 89 | 49-90-2065 | Dust Adaptor Universal (Not Shown) | (1) |
| 90 | 49-90-2070 | Locking Hose Dust Adaptor (Not Shown) | (1) |



● LUBRICATION NOTES:

Type 'J' Grease

No. 49-08-4220, 1 lb. can

When servicing gears or Gear Case, 90-95% of the old grease must be removed prior to new grease being added. Clean gear assemblies with a clean, dry cloth.

- ① Brush a light coating of grease to the O-ring.
- ② Brush grease on the rotor pinion being sure to cover all the teeth.
- ③ Place approximately 6.25 grams of grease on the gearcase, before assemble output shaft assembly.
- ④ Brush a light coating of grease to the entire shaft of spindle assembly and gear teeth.

