

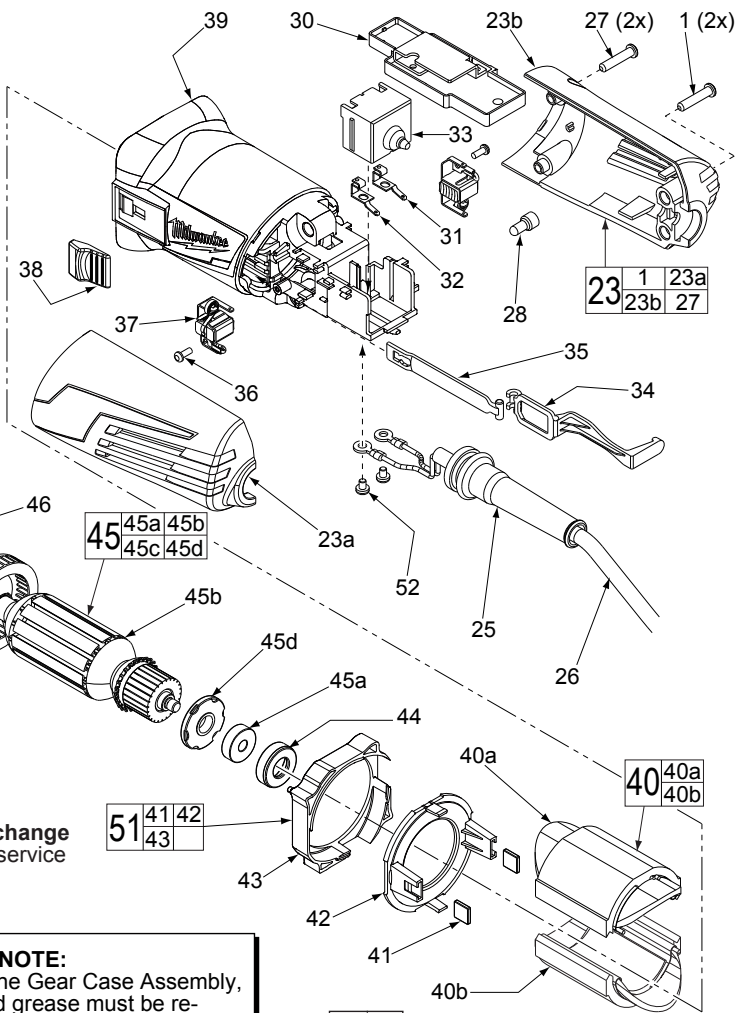
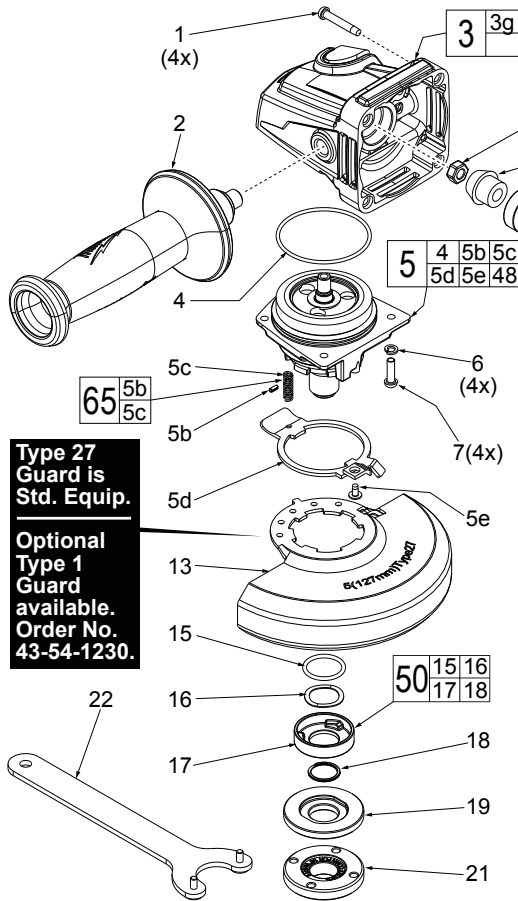


# SERVICE PARTS LIST

**BULLETIN NO.**  
54-38-2132

SPECIFY CATALOG NO. AND SERIAL NO. WHEN ORDERING PARTS		REVISED BULLETIN 54-38-2131	DATE Jan. 2017
<b>5" HP ANGLE GRINDER with SLIDE SWITCH</b>		WIRING INSTRUCTION <b>See Reverse Side</b>	
<b>CAT. NO.</b>	<b>6117-33</b>	<b>STARTING SERIAL NUMBER</b>	<b>C94C</b>

FIG.	PART NO.	DESCRIPTION OF PART	NO. REQ.
★ 1	05-88-1650	M4 x 25mm Pan Hd. ST Screw T-20	(6)
★ 2	42-62-0125	Side Handle Assembly	(1)
★ 3	14-30-1156	Gearcase Assembly	(1)
3g	02-04-0620	Ball Bearing	(1)
4	34-40-0560	O-Ring	(1)
★ 5	14-73-0475	5/8-11 Spindle Hub Kit	(1)
★ 5b	-----	Steel Pin	(1)
★ 5c	-----	Spring	(1)
★ 5d	44-20-0155	Guard Locking Tang	(1)
★ 5e	05-81-0020	M3 x 5mm Pan Hd. ST T-8 Screw	(1)



**Type 27 Guard is Std. Equip.**

**Optional Type 1 Guard available. Order No. 43-54-1230.**

★ = Part number change from previous service parts list.

**\*LUBRICATION NOTE:**  
When servicing the Gear Case Assembly, 90-95% of the old grease must be removed prior to new grease being added.

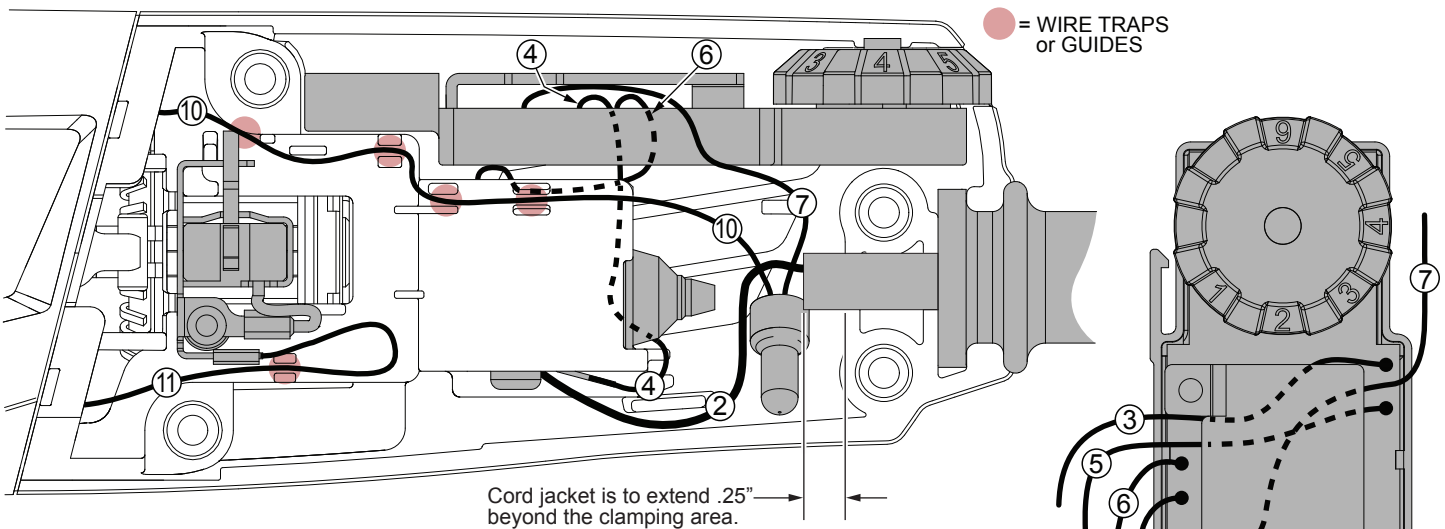
**FIG. LUBRICATION\***  
5 Type "Y" Grease, No. 49-08-5270, Must Be Applied To All Gear Teeth.

00 0

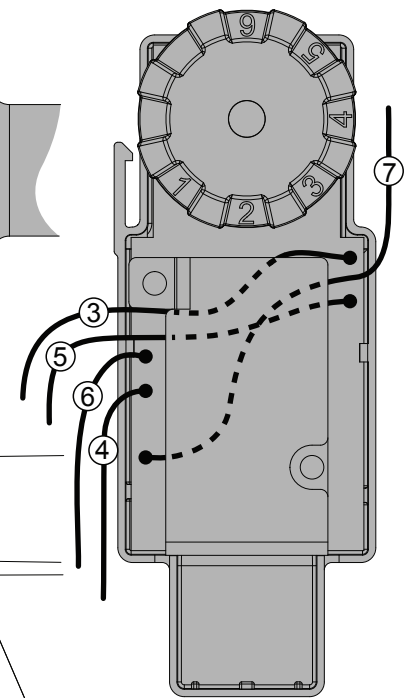
**EXAMPLE:**  
Component Parts (Small #) Are Included When Ordering The Assembly (Large #).

FIG.	PART NO.	DESCRIPTION OF PART	NO. REQ.
6	05-90-0225	Spring Washer	(6)
7	05-78-5316	M4 x 14mm Pan Hd. Tapt. Screw T-20	(4)
★ 13	43-54-1220	5" Type 27 Guard (Standard Equip.)	(1)
★ 13	43-54-1230	5" Type 1 Guard (Optional, Not Shown)	(1)
15	-----	O-Ring	(1)
16	-----	Wavy Spring	(1)
17	-----	Flange with Ramps	(1)
18	-----	Retaining Ring	(1)
19	43-34-0935	Inner Disc Flange	(1)
21	44-40-0035	Outer Flange Nut	(1)
★ 22	49-96-7215	Spanner Wrench	(1)
23	14-34-6120	Rear Handle Set	(1)
23a	-----	Left Handle Halve	(1)
23b	-----	Right Handle Halve	(1)
25	44-76-0095	Cord Protector	(1)
26	22-64-3430	Power Cord	(1)
27	05-88-1300	M4 x 28mm Pan Hd. ST Screw T-20	(2)
28	22-56-0150	Close End Connector	(1)
30	22-09-1835	PCB Assembly	(1)
31	23-74-1620	Terminal	(1)
32	23-74-1615	Terminal	(1)
33	23-66-2665	On-Off Switch	(1)
34	31-84-0090	Slide Pole - Back	(1)
35	31-84-0095	Slide Pole - Front	(1)
36	05-88-0030	M3 x 8.5mm Pan Hd. ST Screw T-10	(2)
37	22-18-2250	Carbon Brush Assembly (Set of 2)	(1)
38	31-89-0245	Slide Switch Button	(1)
39	31-50-2130	Motor Housing	(1)

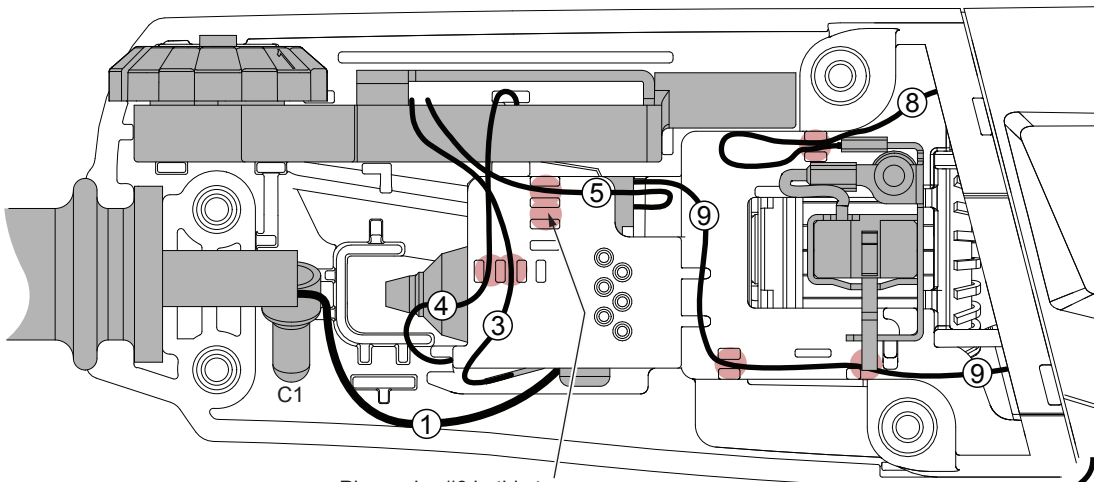
FIG.	PART NO.	DESCRIPTION OF PART	NO. REQ.
40	18-07-0295	Field Assembly	(1)
40a	-----	Field Halve	(1)
40b	-----	Field Halve	(1)
41	42-28-0085	Rubber Block	(2)
42	-----	Baffle Foot	(1)
43	-----	Baffle	(1)
44	42-96-0016	Rubber Bearing Cap	(1)
45	16-10-0845	Armature Assembly	(1)
45a	02-04-2110	Ball Bearing	(1)
45b	-----	Armature	(1)
45c	45-88-0406	Washer	(1)
45d	-----	Magnetic Disc	(1)
46	05-78-0105	M4 x 10mm Pan Hd. Tapt. Screw T-20	(2)
47	44-86-0155	Bearing Retainer	(1)
★ 48	-----	Pinion	(1)
49	05-55-0620	M5 Hex Nut	(1)
50	14-46-6105	Flange with Ramps Assembly	(1)
51	42-14-0515	Baffle Assembly	(1)
52	05-78-0305	M3.5 x 7mm Pan Hd. Phil. Switch Scr.	(2)
56	44-86-0145	Bearing Retaining Plate Assembly	(1)
★ 65	14-46-0241	Spring/Pin Kit	(1)
	12-20-1560	Service Nameplate (Not Shown)	(1)
	10-20-2225	Bi-Lingual Warning Label (Not Shown)	(1)



Cord jacket is to extend .25" beyond the clamping area.



TOP VIEW OF THE PCB ASSEMBLY



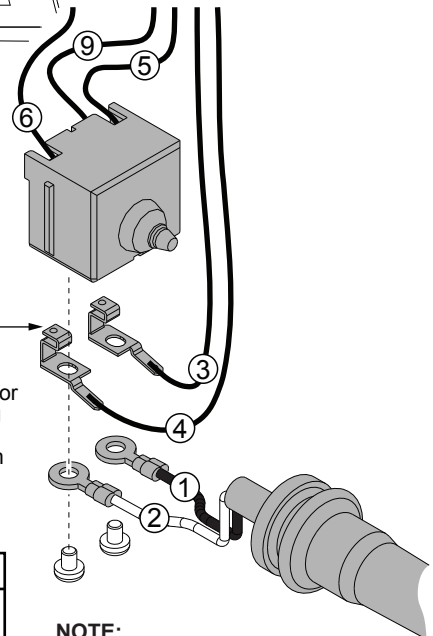
Place wire #6 in this trap.  
See view above for wire routing.

**NOTE- ILLUSTRATIONS ABOVE DEPICT A TOOL WITH A SPEED DIAL ON THE PCB ASSEMBLY. MODELS THAT DO NOT HAVE THE SPEED DIAL FEATURE ON THE PCBA ARE WIRED EXACTLY THE SAME.**

**AS AN AID TO REASSEMBLY, TAKE NOTICE OF WIRE ROUTING AND POSITION IN WIRE GUIDES AND TRAPS WHILE DISMANTLING TOOL.**

**BE CAREFUL AND AVOID PINCHING WIRES BETWEEN HANDLE HALVES WHEN ASSEMBLING.**

**NOTE:**  
Install the two terminals onto switch and slide the switch down into the motor housing prior to installing cord wires 1 and 2 and PCBA wires 3 and 6 from under motor housing.



**NOTE:**  
All leads must be held to  $\pm 1/16"$ .  
All lead lengths are before stripping.

**WIRING SPECIFICATIONS**

Wire No.	Wire Color	Origin or Part No.	Gauge	Length	Terminals, Connectors and End Wire Preparation
1	Black	22-64-3430	--	--	Component of Cord Set. Connect to Switch.
2	White	22-64-3430	--	--	Component of Cord Set. Connect to Switch.
3	Black	22-09-1835	--	--	Component of PCBA. Connect to Switch.
4	White	22-09-1835	--	--	Component of PCBA. Connect to Switch.
5	Black	22-09-1835	--	--	Component of PCBA. Connect to Switch.
6	White	22-09-1835	--	--	Component of PCBA. Connect to Switch.
7	Red	22-09-1835	--	--	Component of PCBA. Connect to C1 with wire #10.
8	White	18-07-0295	--	--	Component of Field. Connect to Right Brush Assy.
9	White	18-07-0295	--	--	Component of Field. Connect to Switch.
10	White	18-07-0295	--	--	Component of Field. Connect to C1 with wire #7.
11	White	18-07-0295	--	--	Component of Field. Connect to Left Brush Assy.

**BULK LEAD WIRE - BULLETIN 58-01-0003**

**TERMINAL DESCRIPTION**

Code	Part No.	Qty.

**CONNECTOR DESCRIPTION**

C1	22-56-0150	1
----	------------	---